

# SECURA<sup>TM</sup> SE-200 DOOR ACCESS SYSTEM

**An ideal system for controlling electric locks & security system.**

Integrated with high quality EM Lock, Power Supply 12V/1A

Very low current consumption

Made in Malaysia

12 months warranty



## FEATURES

- Water resistant, suitable for indoor or outdoor.
- LEDs and Buzzer feedback for easy operation.
- 200 user card storage and 200 user codes in 4/5/6 digits.
- Alert sound when door not being closed properly.
- Tamper to alarm system when break-in.
- Worry-free when power failure or low, data will remain safe and EM Lock will be able to release with valid card scanning or user code entry.
- PC link for user data entry (optional).

## TECHNICAL SPECIFICATIONS

- 1 . Input Voltage : 12VDC
- 2 . Current Consumption : 15 - 100mA
- 3 . Operation Temperature : 0~ 60°C
- 4 . Carrier Frequency : 125KHz
- 5 . Reading Distance : 50mm (max)
- 6 . Relay Contact Rating : 30VDC / 3A
- 7 . Door Bell Contact : 12VDC / 50mA
- 8 . User : 200 RFID Cards + 200 User Codes in 4/5/6 digits.
- 9 . Dimension : 117(H)mm x 117(W)mm x 20(D)mm
10. Net Weight : 180 gram

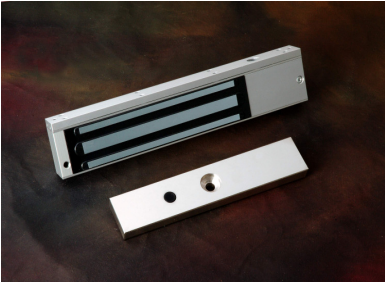
# BTEC INDUSTRIAL INSTRUMENT SDN BHD

## ELECTROMAGNETIC LOCK PRODUCTS

### 600lbs Electromagnetic Lock



Model. 9A @UL2757-SD (with LED indicator, Unmonitored Version)



#### Description

600lbs EM locks were designed to meet fire/life safety applications by providing an auxiliary locking mechanism that has no moving parts to bind or wear out for trouble free operation. This will ensure inhibited release at all times where they have become extremely prevalent in applications other than fire/life safety.

Suitable for access controlled & secure areas within buildings.

#### Standard Features



Life Safety Applications



No Residual



Low Energy Consumption

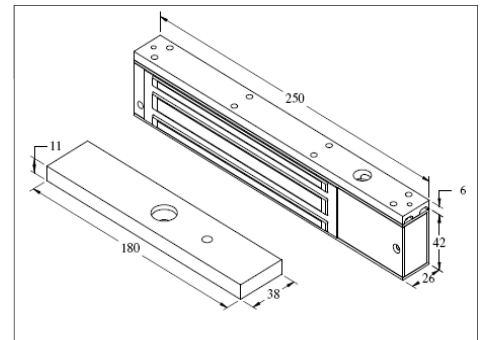


Cost Savings

#### Extended Features

(Optional)

- Electroless Nickel (EN) Plated Armature Plate
- Anodized Aluminum Housing
- CE Compliance
- Versatile Mountings



#### Specification

	<b>EML-UL275C-SP</b>
<b>Magnet Size</b>	250 X 42 X 26 mm
<b>Armature Size</b>	180 X 38 X 11 mm
<b>Holding Force</b>	Up to 600lbs
<b>Current Drain</b>	480mA+10%/12Vdc
<b>Temperature</b>	(-10 to 55)°C (14 to 131)°F
<b>Weight</b>	2.0kg

**WARRANTY:** EM Lock warranted against defects in material and workmanship while used in normal service for a period of F year from the date of purchase.

**DISCLAIMER:** Specifications are subject to change without prior notice.